

Product Overview

The MIWI350 is the latest offering in the Honeywell's EVC Product Line. This product line provides a more competitive, reliable, and easy to use solution. It provides a comprehensive selection of communication hardware and power supply systems optimized to integrate with the Mercury Instruments precision measurement instrumentation. It also includes software for Remote Monitoring and Data Acquisition (RMADA), including alarm handling and notification.

The MIWI350 typically device includes:

- An integrated Electronic Volume Corrector or Electronic Recorder (using electronics from the Honeywell EC350/ERX350)
- An integrated electronic cellular modem



Product Features

- CSA C/US Class 1, Division 2, Group C & D certification
- Compatible with MasterLink and PowerSpring software
- Available in UMB (Universal Mounting Bracket), Wall, Pipe, and Portable mounting options
- Internal or External Mounted Display
- Modem Power Control through Power Distribution Board
- Optional Backup Battery for Uninterrupted EVC Functionality
- Pressure Expansion (PE) Board for Third Pressure, P3

Power Supply Options

- Solar Power with rechargeable Sealed Lead-Acid Battery (Refer to FD-612)
- Battery - Alkaline Packs (Dual/Quad) (Refer to FD-613)
- Power or Communications Box (Refer to FD-614)

This quick-start guide covers the AC-DC and External DC 12V Power variant only.

General Safety Precautions

- Lock the battery mount bracket flip cover properly after mounting the battery
- Close the door of the MIWI350 device properly
- Check the lock and latch, and lock the MIWI350 device properly
- Check the padlock properly while locking the MIWI350 device

Safety and Hazardous Information

MIWI350 complies with the general safety standards and regulations. However, failure to operate this product as per the safety instructions available in this document may lead to hazards.

It is approved for use in hazardous areas Class I, Division 2. Different versions of MIWI350 are available depending on the operating temperature conditions. The permitted operating conditions are marked on each product. Check the operating condition limits of MIWI350 before installing. You must be familiar and comply with the currently applicable electrical installation standards and regulations before installing and operating MIWI350 in hazardous areas.

Warning: Denotes an explosion hazard. Ensure you follow all instructions described in the warning notification.

Caution: The caution warns you of possible damage to property and provides instructions to avoid damage to MIWI350.

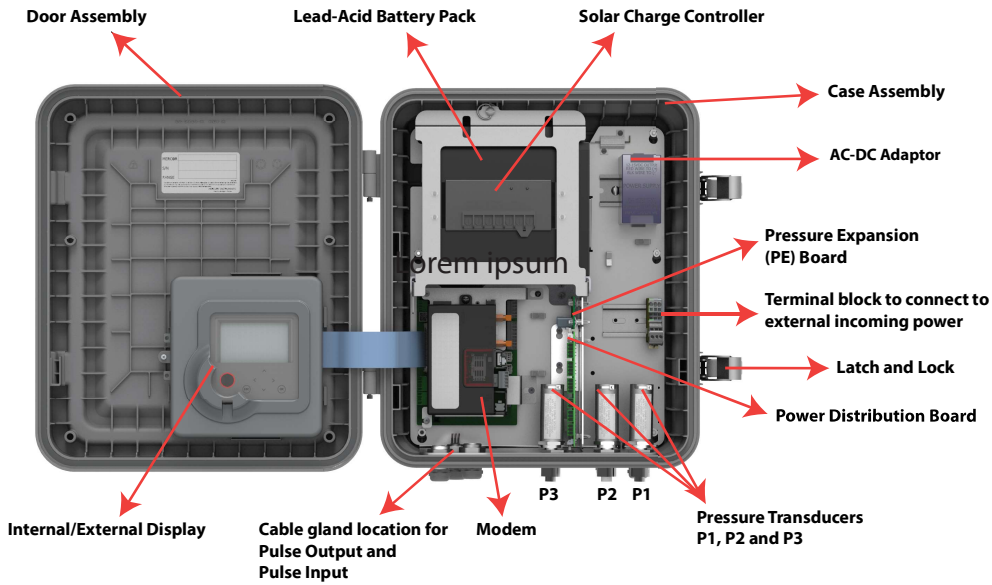
For more information on MIWI350 user manual, refer FD-610.

Unpacking

After you receive the MIWI350 device:

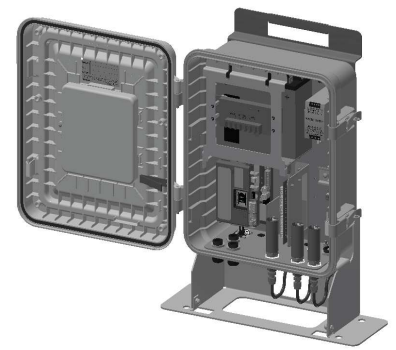
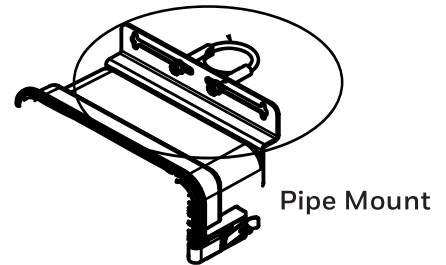
1. Remove the contents from the box and the mounting kit bag.
2. Check the shipment against the invoice to ensure that the components ordered are installed in MIWI350.
3. Report any shortage or shipping damages to your nearest Honeywell Account Manager.

MIWI350 Device with Door and Case Assembly



Instrument Mounting Options

Install the MIWI350 device using one of the following mounting options:



Cable Gland Entries



Setting up the MIWI350 Device



01

Release the door latches of the device one at a time, and open the door of the device

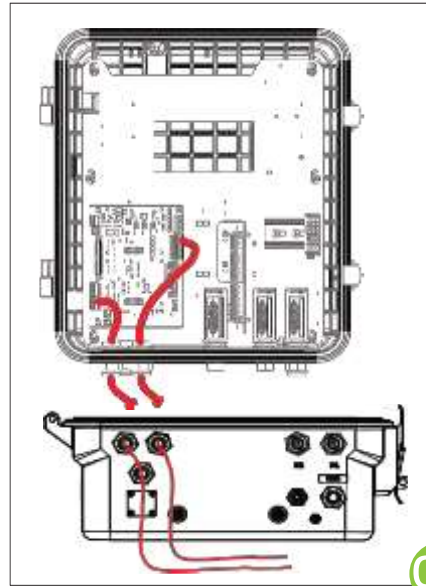


02



04

Install the temperature probe to the pipeline and tighten the nut to avoid leakage (if applicable)



03

Route the pulse input/output cables through the glands (if applicable)

06

Close the door of the device properly. Also, check the padlock, latchet and lock the device.



05

Route the external power cable* through the **05** gland and connect to power terminal block

* It is required to use a UL/CSA approved cable with working voltage spec of min 300V. Cable shall be protected with an outer sheath.

Connecting Lead-Acid Battery

For a fresh Lead-Acid Battery, the No Load Voltage is expected to be between 12.5–13.5VDC.

WARNING: Please perform the No Load Battery Voltage measurement in an area rendered Non Hazardous. Please exercise caution to ensure the Battery Terminals do not come in contact with any other metal objects during the measurement/handling.



01

Quarter turn the screw and open the battery mount bracket flip cover (CCW)



02

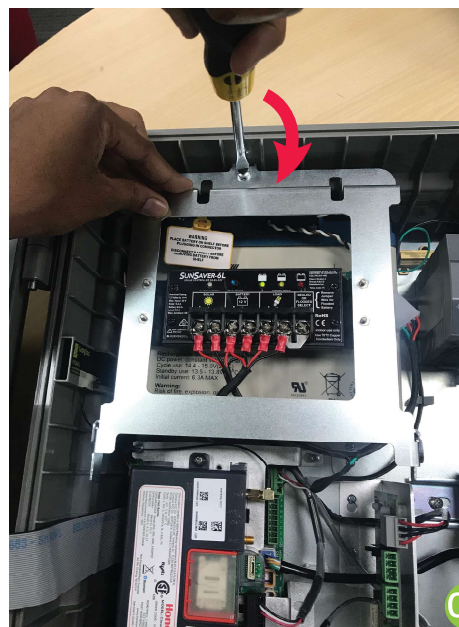
Insert the battery in the mount bracket carefully



03

Connect the battery pack cable# to battery charge controller cable

40-6169-3 - If you are connecting a 12V 7Ah lead-acid battery
40-6169-2 - If you are connecting a 12V 21Ah lead-acid battery

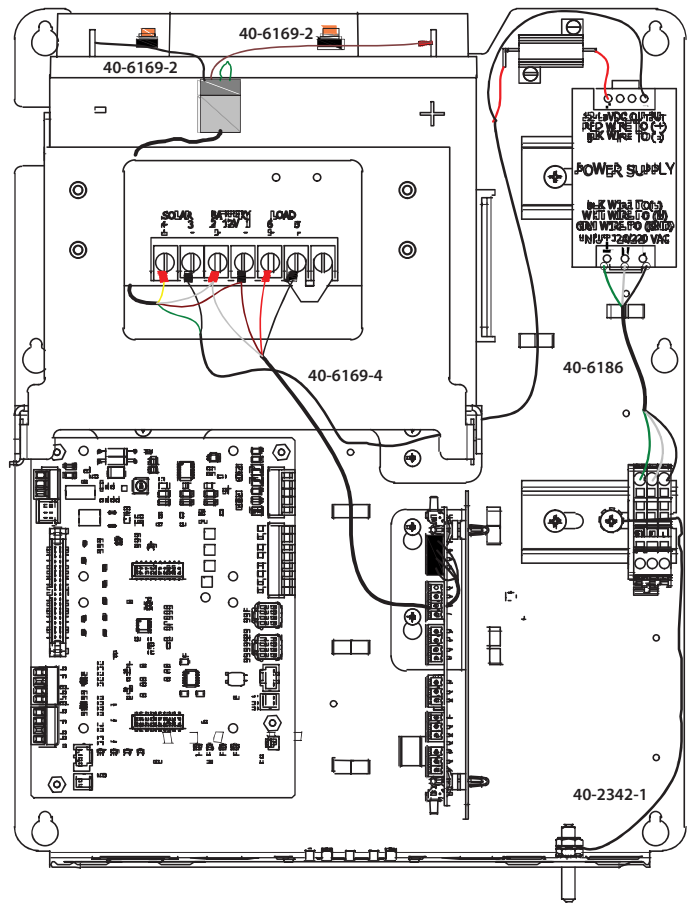
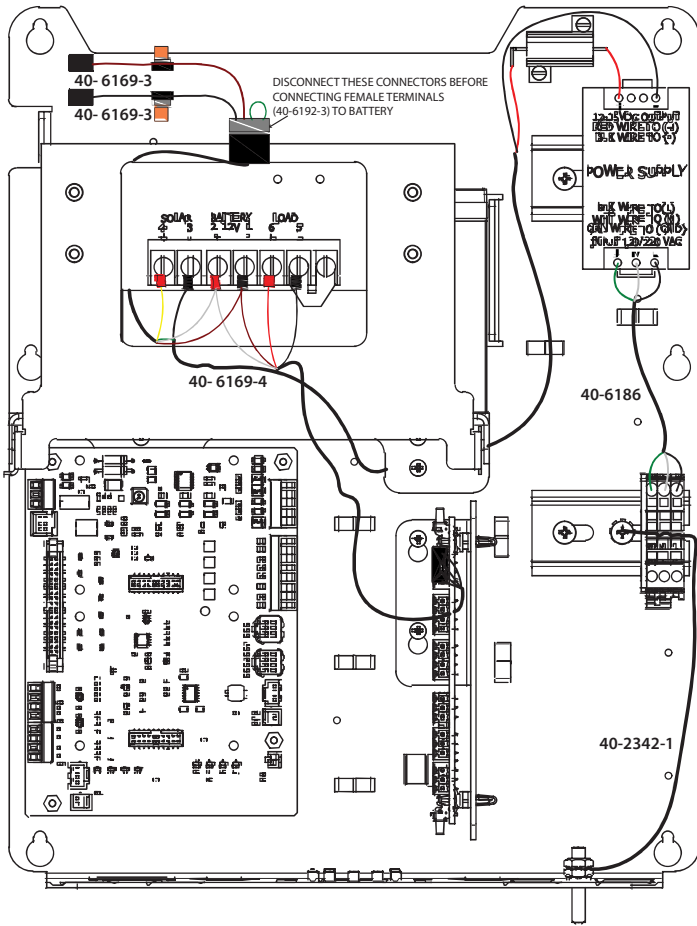


04

Close the battery mount bracket flip cover and turn back the screw (CW)

05 Configure modem/EC/ERX350/HMI settings
(For more information, refer MIW350 Installation and Operational Manual FD-610)

120-230VAC TO 15VDC adjustable Power Supply Wiring

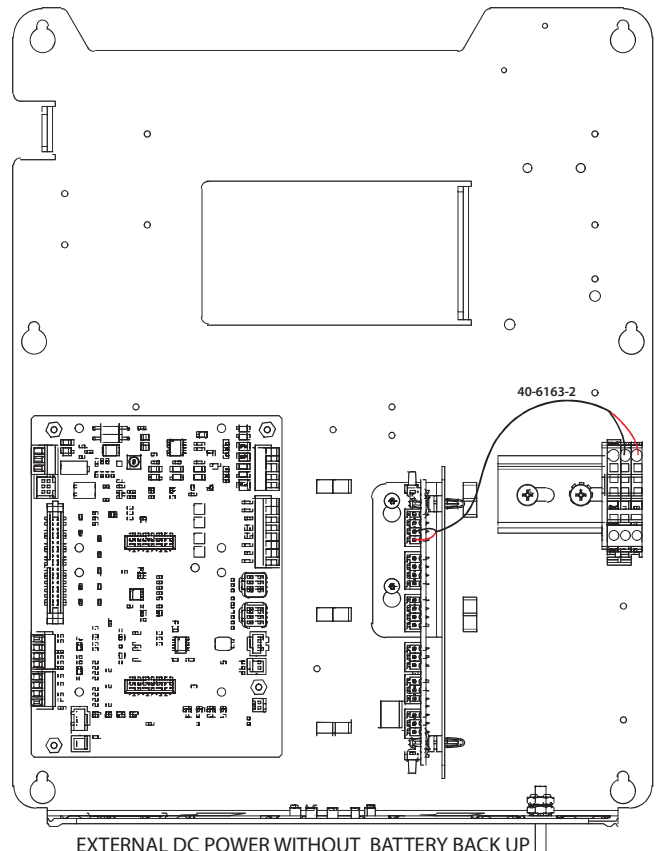
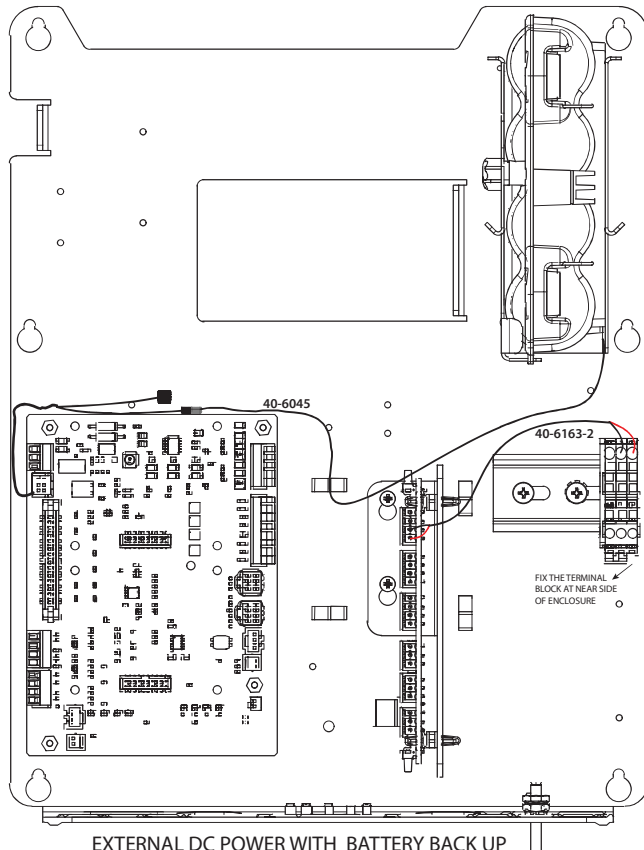


7 AH BATTERY WITH 120V AC/15V DC ADJUSTABLE POWER SUPPLY

21 AH BATTERY WITH 120V AC/15V DC ADJUSTABLE POWER SUPPLY

CAUTION: MAKE SURE THE AC POWER IS DISCONNECTED BEFORE OPENING THE ENCLOSURE

External DC 12V Power Supply Wiring



List of associated cable assemblies pre-installed in the device

Part Number	Description
40-6045	ASSEMBLY CABLE POWER
40-6186	CABLE, POWER T/B TO AC-DC MIWI350
40-6169-2	21AH LEAD-ACID BATTERY CABLE
40-6169-3	7AH LEAD-ACID BATTERY CABLE
40-6169-4	SOLAR CHARGE CONTROLLER, LOAD O/P CABLE
40-6163-2	POWER SUPPLY CABLE
40-2342-1	GROUND CABLE

NOTES

For more information:

To learn more about Honeywell's Smart Gas Metering Solutions, visit www.honeywellprocess.com or contact your Honeywell Process Solutions representative.

Honeywell Process Solutions

1280 Kemper Meadow Drive Cincinnati,
OH 45240
855-2511-7065 - United States & Canada
302-669-4253 - Outside the United States
MI-TAC-Support@Honeywell.com