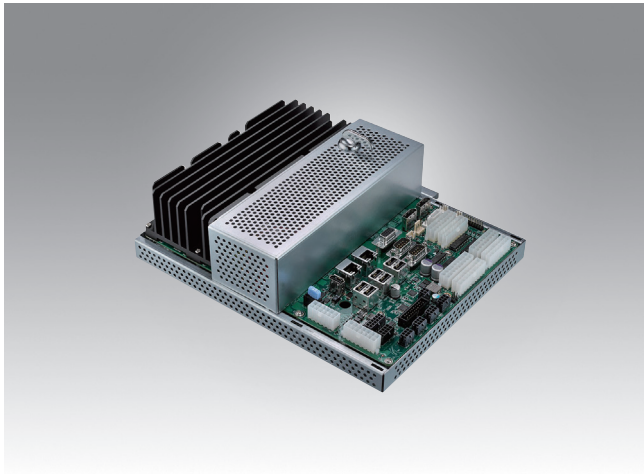


# DPX<sup>®</sup>-E135

## AMD<sup>®</sup> Embedded G-Series Gaming Platform



### Features

- Dual and Quad core AMD G Series SOC platform
- Comprehensive gaming features
- High performance Radeon HD8000 series graphics
- Passive cooled system
- 12V DC single input or ATX power
- "Cabinet-ready" I/O connectors on-board



### Introduction

The DPX<sup>®</sup>-E135 is a completely integrated system for gaming applications. Based on the 3rd generation of AMD's G Series embedded platform, the DPX-E135 provides a complete PC platform with a passive cooling system. The system uses AMD's latest high performance dual and quad core SOC devices with "Discrete-level Graphics" from the integrated HD8000 series graphics core. Two independent monitors are supported via two DisplayPort 1.2 DP++ ports plus VGA. A full feature set of I/O and COMs designed specifically for gaming devices is also included making the DPX-E135 an ideal integrated platform for many gaming, amusement and kiosk applications.

### Specifications

System	AMD Embedded G-Series Dual and Quad Core APUs
	Long life cycle 5 years availability
	DDR3-1866, 2 SODIMMs up to 16GB
Video (Integrated)	Integrated – Radeon HD8000 series graphics engine
	Dual monitor support from APU
	Two DP++ interface support DisplayPort plus single VGA Direct X 11, OpenGL 4.2, OpenCL 1.2, DirectCompute support
Security	TPM security device on board
	Intrusion switch inputs (8 dedicated)
	BIOS customization
	iButton <sup>®</sup> socket and external iButton reader support Precision secure Real time clock device
Software	Edge-to-edge drivers and Software API/SDK
	Code portability through consistent API with other Innocore boards. Range of Advantech-Innocore software products for Gaming
CPU/Chipset	AMD G Series SOC Processing Unit (APU) Dual and Quad Core APUs up to 2.4GHz, up to 2MB L2 cache Low power (25W Max) APUs
Memory	2 x SODIMM sockets Up to 16GB DDR3 1866 MT/s SDRAM system RAM
BIOS	AMI APTIO UEFI BIOS
	BIOS can be write protected
	BIOS expansion ROM module

LAN	2 x Ethernet Gigabit LAN
	Full duplex operation
	Wake-On-LAN capability PXE boot option
Storage	2 x C-Fast <sup>™</sup> sockets
	2 x SATA 3 (up to 6Gb/s) headers for HDD, SSD or SATA DOM
	1 x SD Card
Ports	4 x RS232 (2 x fully featured, 2 x Tx/Rx/RTS/CTS)
	2 x CCTalk
	1 x TTL
	1 x ID003
	1 x RS485
iButton/GPIO	9 x USB (2x USB 3.0)
	2 x I <sup>2</sup> C port
Discrete I/O	Bi-Directional GPIO header for iButton, special purpose device, security module
	32 ESD protected inputs
	32 OC Outputs (500mA, 50V) Of which 8 I/O ports can be configured as meter outputs with disconnect detect
LED drive	2 x 4 channel LED driver
Sound	HD 5.1 audio with stereo amplified outputs 20W/ch,
SRAM (NVRAM)	Up to 8MB battery backed fast SRAM Battery state software readable
TPM	TCPA/TPM 2.0/1.2 compliant security device on board.
Watchdog Timer	Programmable time-out

## Specifications Cont.

EEPROM	32KB user EEPROM (option for larger)
Asset Tag	Unique API readable serial number
Intrusion Detection	8x Intrusion detection input lines
	Operates with and without system active
	Logs date/time of last 254 events
System Health Monitoring	Measurement of CPU core temp. With thermal trip.
	PWM fan control for system fans.

Power Fail Detect	External sensor input for advanced warning of AC power fail
Expansion	I <sup>2</sup> C, 1-wire
Power	12V DC single input or ATX power supply, scheduled power up, event log, system health monitoring
Environment	Operating Temperature: 0 ~ 45 °C
	Storage Temperature: -20 ~ 85 °C
Approvals	EMC: CE, FCC Class A
	RoHS, WEEE
Dimensions	200 mm (W) x 270 mm (L)

## Benefits

- Performance integrated graphics
- Single integrated solution
- Designed for the Gaming Industry
- "Cabinet-ready" connectors
- Small size
- Low power
- Long Lifecycle

## Optional Accessories

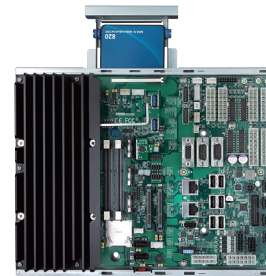
- CFast™ cards, SATA DOM, SSD storage devices
- iButtons®
- Base and Short Cover - logic area secure cover
- Base and Long Cover – cable and logic area secure cover

## Software Products

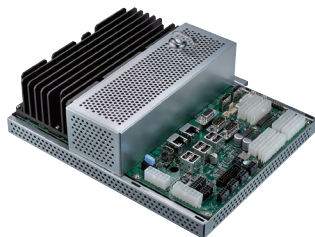
- SecureBoot SDK
- DPX Connector SDK
- DPX Diagnostics
- DPX SAS Engine
- TPM Suite SDK

## OEM Customization and Product Development

- Advantech-Innocore is part of the Advantech Co., Ltd. Group of Companies.
- Advantech-Innocore specializes in the fields of PC-based hardware design and software development. Our in-depth knowledge and global resources make us your ideal partner.
- Specifications subject to change. E&OE.
- Copyright © 2016 Advantech Co., Ltd.
- All rights reserved. Advantech-Innocore, the Advantech-Innocore Logo and DPX are trademarks of Advantech Co., Ltd. in the UK, US and other countries.
- All other trademarks are acknowledged and respected.



DPX-E135 shown with SSD tray extended



DPX-E135 shown with logic area cover



DPX-E135 shown with logic area and cable cover