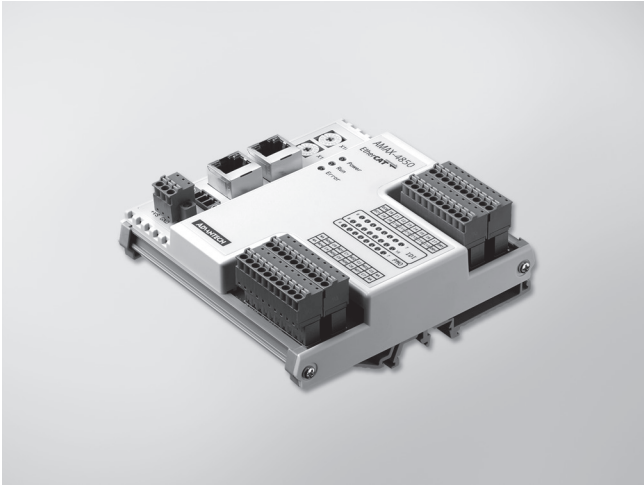


AMAX-4850

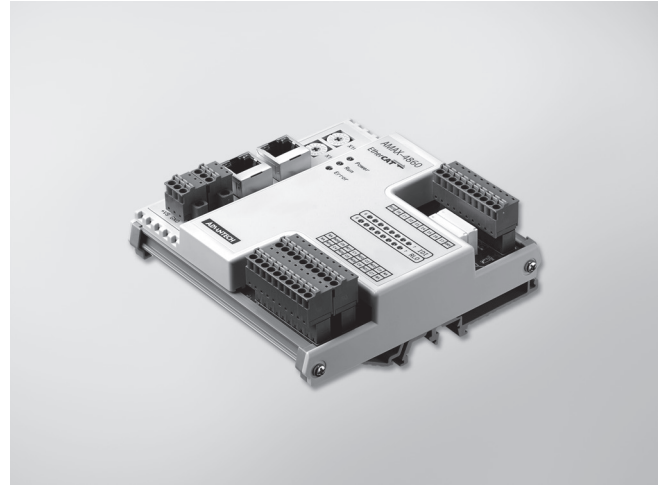
AMAX-4860

16-ch IDI & 8-ch PhotoMOS EtherCAT Remote I/O module

8-ch IDI & 8-ch Relay EtherCAT Remote I/O module



AMAX-4850



AMAX-4860



Features

- Suitable for EtherCAT networks
- 16-ch digital input and 8-ch PhotoMOS Relay output (Form A)
- 1500 V_{DC} optical isolation for relay outputs
- Quick removable European type connector
- LED indicators for I/O status
- Supports EtherCAT Distributed Clock (DC) mode and SyncManager mode
- Two Rotary switches for up to 256 slave IDs

Introduction

The AMAX-4850 is an industrial EtherCAT slave module equipped with the EtherCAT protocol. Its compact size and DIN-rail mount kit can install easily in a cabinet. Euro type pluggable terminal blocks and LED indicator help users to maintain and set up their system. All digital input and PhotoMOS Relay Output channels are protected by isolation circuits.

Specifications

Communication

- **Interface** EtherCAT
- **Data transfer medium** Ethernet/EtherCAT cable (min. CAT 5), shielded
- **Distance between modules** Max. 100 m (100BASE-TX)
- **Communication Cycle Time** 200µs
- **Data transfer rates** 100 Mbps
- **Configuration** Not required

Digital Input

- **Channels** 16
- **Input voltage** Logic 0: 3 V max.; Logic 1: 10 V min. (30 V max.)
- **Isolation protection** 2,500 V_{DC}

PhotoMOS Relay Output

- **Channels** 8
- **Relay type** PhotoMOS SPST(Form A)
- **Load Voltage** 60V (AC peak or DC)
- **Load current** 1.2A
- **Peak load current** 4A @100ms(1 pulse)
- **Isolation protection** 1,500 V_{DC}
- **Turn-on time** 1 ms typical
- **Turn-off time** 0.6 ms typical

General

- **Connectors** 10-pin 3.81 mm terminal block * 4 (I/O)
3-pin 3.81 mm screw terminal block (power)
RJ-45 * 2 (EtherCAT)
- **Dimensions** 120 mm x 120 mm x 40 mm
- **Operating temperature** -20 ~ 60°C (32 ~ 140°F)
- **Storage temperature** -40 ~ 70°C (-40 ~ 158°F)
- **Storage humidity** 5 ~ 95% RH (non-condensing)
- **Power supply** 10 ~ 30 V_{DC}
- **Power Consumption** Typical 85mA @24V; Max. 110mA @24V

Ordering Information

- **AMAX-4850-AE** 16 IDI & 8 PhotoMOS EtherCAT Remote I/O module
- **96PS-A40WDIN** DIN RAIL A/D 100-240V 40W 24V

Features

- Suitable for EtherCAT networks
- 8-ch Isolated Digital Input and 8-ch Form A-type Relay Output
- High-voltage isolation on input channel (2,500 V_{DC})
- Quick removable European type connector
- LED indicators for I/O status
- Supports EtherCAT Distributed Clock (DC) mode and SyncManager mode
- Two Rotary switches for up to 256 slave IDs

Introduction

The AMAX-4860 is an industrial EtherCAT slave module equipped with the EtherCAT protocol. Its compact size and DIN-rail mount kit can install easily in a cabinet. Euro type pluggable terminal blocks and LED indicator help users to maintain and set up their system. All digital input channels are protected by 2,500 V_{DC} isolation circuits.

Specifications

Communication

- **Interface** EtherCAT
- **Data transfer medium** Ethernet/EtherCAT cable (min. CAT 5), shielded
- **Distance between modules** Max. 100 m (100BASE-TX)
- **Data transfer rates** 100 Mbps
- **Configuration** Not required
- **Communication Cycle Time** 200µs

Digital Input

- **Channels** 8
- **Input voltage** Logic 0: 3 V max.; Logic 1: 10 V min. (30 V max.)
- **Isolation protection** 2,500 V_{DC}

Relay Output

- **Channels** 8
- **Relay Type** Form A
- **Contact Rating (resistive)** 2A@250V_{AC}, 2A@30V_{DC}
- **Max. Switching Power** 500VA, 60W
- **Max. Switching Voltage** 270V_{AC}, 125V_{DC}
- **Resistance** 30mΩ max.
- **Operating Time** Max. 10ms
- **Releasing Time** Max. 5ms
- **Life Expectancy** Mechanical 2 x 10⁷ ops. at no load.
Electrical 3 x 10⁴ ops. @2A/250V_{AC}

General

- **Connectors** 10-pin 3.81 mm terminal block * 3 (I/O)
3-pin 3.81 mm screw terminal block (power)
RJ-45 * 2 (EtherCAT)
- **Dimensions** 120 mm x 120 mm x 40 mm
- **Operating temperature** -20 ~ 60°C (32 ~ 140°F)
- **Storage temperature** -40 ~ 70°C (-40 ~ 158°F)
- **Storage humidity** 5 ~ 95% RH (non-condensing)
- **Power supply** 10 ~ 30 V_{DC}
- **Power Consumption** Typical 85mA @24V; Max. 110mA @24V

Ordering Information

- **AMAX-4860-AE** 8-ch IDI & 8-ch Relay EtherCAT Remote I/O module
- **96PS-A40WDIN** DIN RAIL A/D 100-240V 40W 24V